

Safety instructions

Important! Before commencing installation work disconnect the main cable from the power supply - remove fuse or turn switch to "OFF"!

1. Installation should be carried out in accordance with the local safety regulations.
2. In order to prevent damage, please check walls for cables before drilling holes.
3. Please ensure that all electrical connections (even preassembled lamps) are screwed tightly or are fully inserted as good contact is essential for a long life-span at high currents. Please check for tight connections after changing or adjusting lamps. Screwed connections must be tightened after 20 minutes.
4. Please do not place objects on your system (e.g. for decorative purposes) if they were not delivered with the system.
5. The lamps get very hot when in use. Please allow lamps to cool down before touching.
6. Do not change lamps or spots when switched on.
7. System should not be enlarged with additional lamps.
8. Use of a dimmer is highly recommended. Dimmer must be compatible with type of light source.
9. To avoid greasy fingerprints it is recommended to wear white cotton gloves when handling visible metal and glass parts.
10. If the external flexible cable or cord of this luminaire is damaged, it shall be exclusively replaced by the manufacturer or his service agent or a similar qualified person in order to avoid a hazard.
11. We reserve the right to make technical alterations.

Please keep these instructions.

Light source: Replaceable LED-module (1990020)

2024-01-08 EU



NUURA

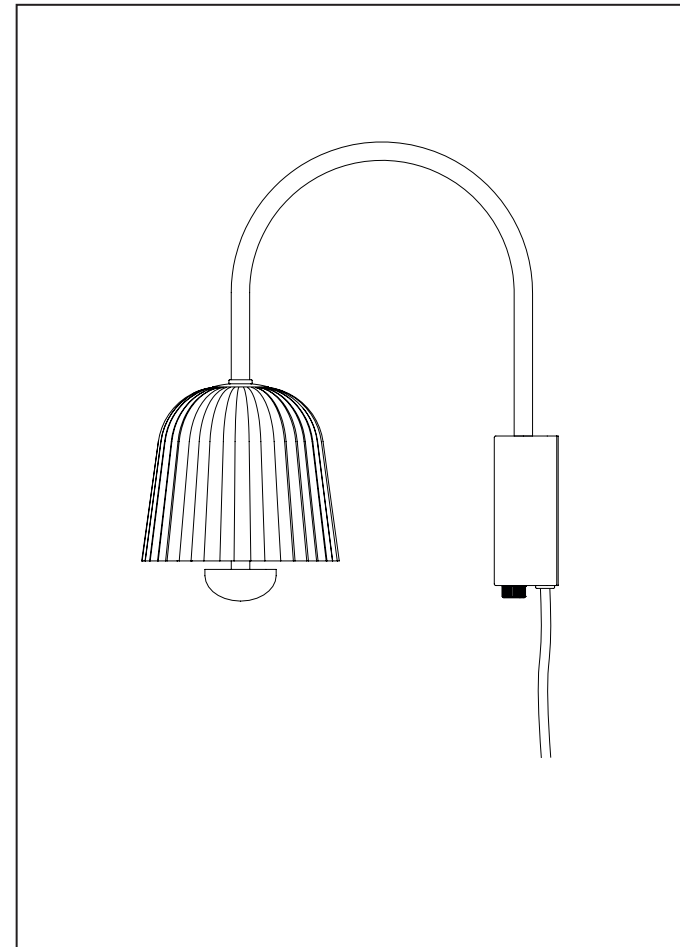
www.nuura.com
info@nuura.com

© 2025 All rights reserved



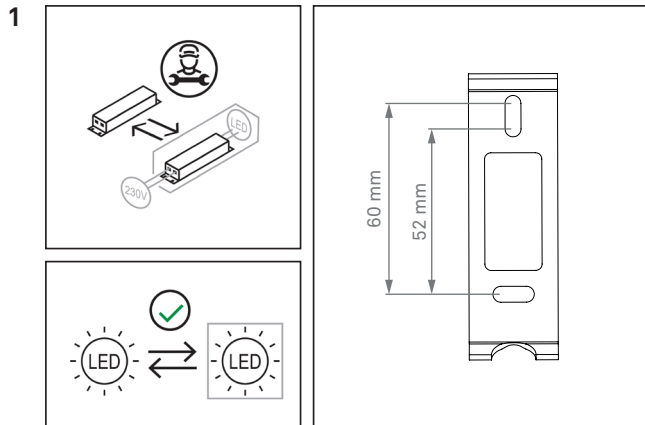
Asteea Wall

Assembly Instructions



NUURA

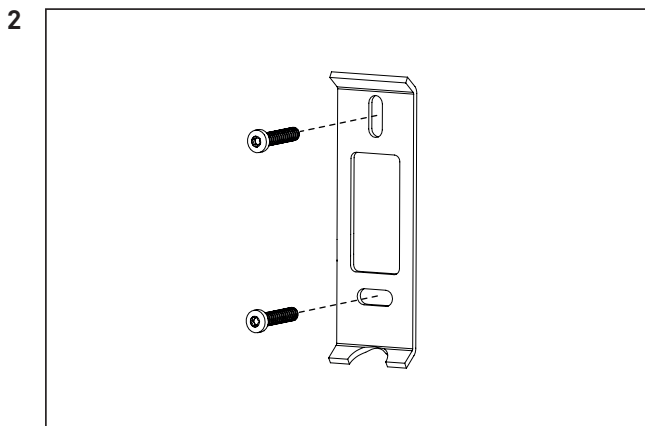
© 2025 All rights reserved



The driver must be replaced by a professional.

The LED-module is replaceable by the end-user. Instructions at www.nuura.com.

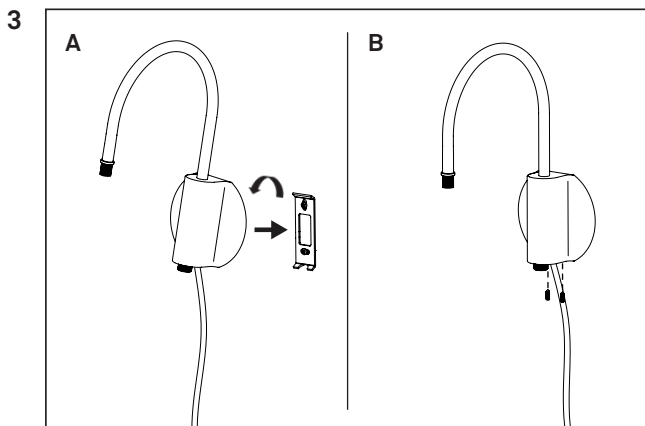
Mounting hole dimensions.



Mount the bracket to the wall with screws.

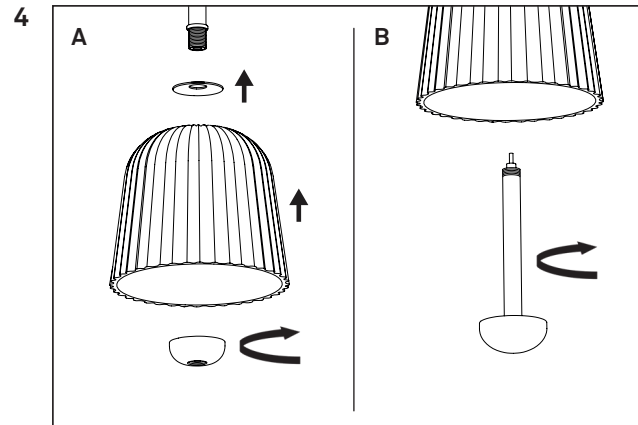
Make sure to use appropriate rawplugs/anchors for your construction. (Not included.)

Use a spirit level to ensure vertical position.



A: Attach the lamp to the bracket by placing it over the bracket.

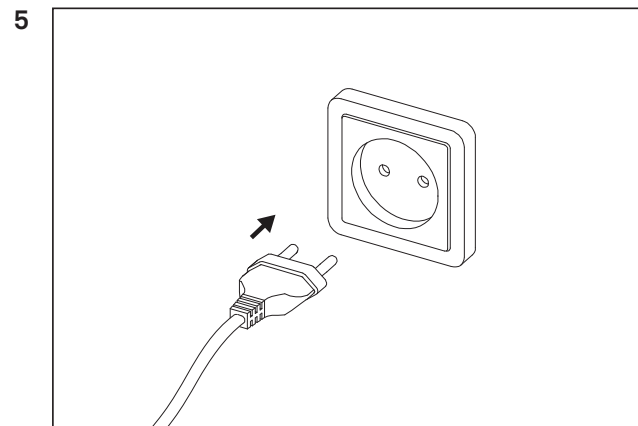
B: Tighten up the 2 set screws on the bottom to secure the lamp base.



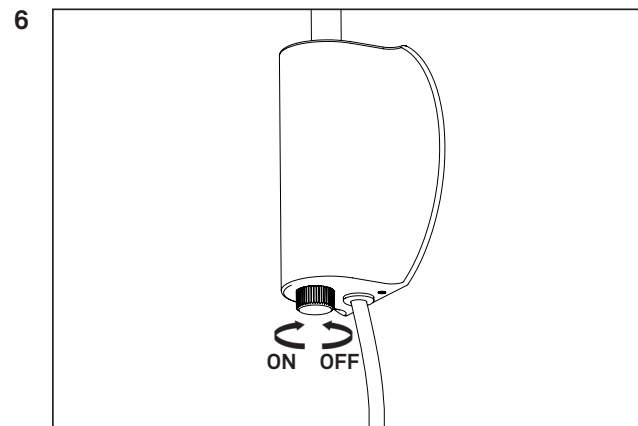
A: Place the curved washer and lamp shade over the thread.

Lock in place by tightening the reflector under the lampshade.

B: Tighten the LED-assembly into the reflector by turning clockwise.



Insert the plug into a power outlet.



With the rotary switch, turn ON by rotating clockwise and OFF by turning counterclockwise.